

JCM 432 All Stainless Steel Tapping Sleeve

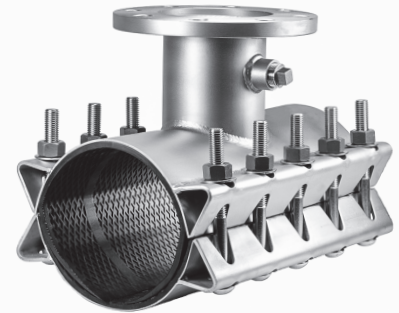
JCM 462 Stainless Steel Tapping Sleeve with Carbon Steel Flange

EXTRA BOLTING POWER...The true tapping sleeve design of this sleeve incorporates replaceable, self-aligning bolts, which facilitate conversion of high bolt torques to high gasket pressure, can be torqued to 125 ft. lbs. This increases gasket sealing pressure and pressure holding capability.

FULL CIRCUMFERENTIAL SEAL...The extra bolting power assures the gasket will seal the full circumference of the pipe. This provides insurance against beam breaks in size on size taps. Molded in recessed bridge plate assures even gasket pressure throughout the range of the sleeve.

STRONGER YET LIGHTER THAN CAST SLEEVES...Extra strength eliminates possible cracking of the sleeve or flange. Reduced weight speeds installation and reduces the load placed on the pipe.

EXTRA WIDE FOR SUPPORT AND STABILITY...Extra width and heavier neck and body material provide extra reinforcement of the outlet and extra stability during the tapping process.



JCM 432 - All stainless construction provides extra corrosion resistance. The stainless steel flange, outlet and body join as one unit of similar metals for highest structural strength and corrosion resistance.

JCM 462 - Stainless steel body/neck construction joins with a strong, economical carbon steel flange. Coated steel flange is to AWWA C207, Class D standard with recess for tapping alignment.

Sleeve pressure rating with standard stainless steel flange:

Sleeves 4" - 24" nominal pipe sizes: 150 PSI working pressure, per ANSI/AWWA C228 Class SD

Sleeve pressure rating with optional ANSI stainless steel flange:

Sleeves 4" - 12" nominal pipe sizes: 250 PSI working pressure, hydrostatic test pressure of 300 PSI.

Sleeves 14" - 24" nominal pipe sizes: 200 PSI working pressure, hydrostatic test pressure of 250 PSI

MATERIAL SPECIFICATIONS - JCM 432 and 462 TAPPING SLEEVES:

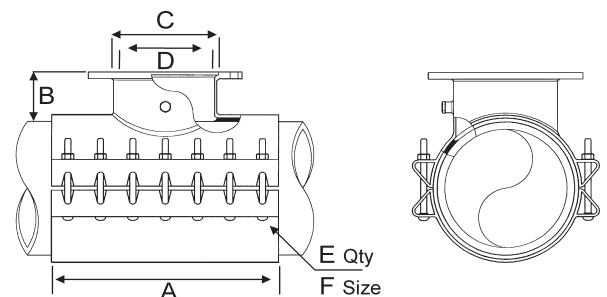
- Body:** Stainless Steel, 18-8 Type 304
- Bolts:** Stainless Steel, Type 304
- Branch Outlet:** Schedule 10 Stainless Steel Pipe
- Gasket:** Full circumferential gasket compounded for use with water, salt solutions, mild acids, bases and sewage.
- 432 Flange:** 18-8 Type 304 Stainless Steel per ANSI/AWWA C228 Class SD. ANSI 150lb. Drilling, recessed for tapping valve per MSS-SP 60.
- 462 Flange:** AWWA C207 Class D, ANSI 150lb. Drilling, recessed for tapping valve MSS-SP60.



JCM Tapping Sleeves meet or exceed the ANSI/AWWA C-223 and the MSS-SP 124 Standards as applicable.

JCM 432 & 462 STAINLESS STEEL TAPPING SLEEVE DIMENSIONS

FLANGE SIZE	A	B	C	D	E	F
2	15	5	3-1/32	2.16	10	5/8
3	15	5-1/8	4-1/32	3.26	10	5/8
4	15	5-1/4	5-1/32	4.26	10	5/8
6	15	5-3/8	7-1/32	6.35	10	5/8
8	21	5-3/8	9-1/32	8.32	14	5/8
10	27	5-3/8	11-1/16	10.42	18	5/8
12	30	5-3/8	13-1/16	12.39	20	5/8



Stainless Steel Tapping Sleeve - Full Circumferential Gasket - Flanged Outlet

JCM 432 Stainless Steel Flanged Outlet

JCM 462 Carbon Steel Flanged Outlet

NOM. PIPE SIZE (IN.)	SLEEVE O.D. RANGE (IN.)	MODEL 432 STAINLESS STEEL FLANGE CATALOG NUMBER	MODEL 462 CARBON STEEL FLANGE CATALOG NUMBER	OUTLET SIZES	WIDTH OF SLEEVE	NUMBER OF BOLTS	APPR. WT. EA. LBS
4	4.40 - 4.60	432-0450	462-0450	X 2	15	10	38
	4.50 - 4.80	432-0465	462-0465	X 3	15	10	40
	4.74 - 5.00	432-0480	462-0480	X 4	15	10	42
	5.10 - 5.30	432-0520	462-0520				
6	6.56 - 6.90++	432-0663	462-0663	X 2	15	10	42
	6.83 - 7.16	432-0690	462-0690	X 3	15	10	42
	7.05 - 7.40	432-0720	462-0720	X 4	15	10	47
	7.40 - 7.73	432-0745	462-0745	X 6	15	10	49
8	8.54 - 8.74	432-0863	462-0863	X 2	15	10	45
	8.60 - 9.05++	432-0900	462-0900	X 3	15	10	45
	8.98 - 9.37	432-0905	462-0905	X 4	15	10	51
	9.27 - 9.69	432-0940	462-0940	X 6	15	10	54
		432-0940	462-0940	X 8	21	14	78
10	9.83 - 10.25+	432-1000	462-1000	X 2	15	10	46
	10.64 - 10.86	432-1075	462-1075	X 3	15	10	46
	11.00 - 11.40	432-1110	462-1110	X 4	15	10	55
	11.36 - 11.80	432-1140	462-1140	X 6	15	10	60
	11.76 - 12.24	432-1200	462-1200	X 8	21	14	72
		432-1200	462-1200	X 10	27	18	132
12	12.62 - 12.88	432-1275	462-1275	X 2	15	10	47
	12.75 - 13.20++	432-1300*	462-1300*	X 3	15	10	47
		432-1320	462-1320	X 4	15	10	60
	13.10 - 13.50	432-1320	462-1320	X 6	15	10	64
	13.70 - 14.09	432-1392	462-1392	X 8	21	14	90
	14.08 - 14.40	432-1420	462-1420	X 10	27	18	138
432-1420		462-1420	X 12	30	20	161	
14	15.20 - 15.60 15.80 - 16.20 16.38 - 16.78	432-1530 432-1600 432-1650	462-1530 462-1600 462-1650	X 2	15	10	74
				X 3	15	10	74
				X 4	15	10	80
				X 6	15	10	85
				X 8	21	14	114
				X 10	27	18	150
X 12	30	20	171				
16	17.40 - 17.80 17.75 - 18.15 18.58 - 18.98	432-1740 432-1800 432-1875	462-1740 462-1800 462-1875	X 2	15	10	78
				X 3	15	10	78
				X 4	15	10	78
				X 6	15	10	90
				X 8	21	14	126
				X 10	27	18	163
X 12	30	20	175				
18	19.30 - 19.70 19.80 - 20.20 21.20 - 21.40	432-1950 432-1990 432-2130	462-1950 462-1990 432-2130	X 3	15	10	80
				X 4	15	10	80
				X 6	15	10	90
				X 8	21	14	130
20	21.40 - 21.80 21.90 - 22.30 22.30 - 22.70	432-2160 432-2206 432-2250	462-2160 462-2206 462-2250	X 3	15	10	85
				X 4	15	10	85
				X 6	15	10	92
				X 8	21	14	136
24	23.45 - 23.85 25.60 - 26.00 26.20 - 26.60	432-2360 432-2580 432-2632	462-2360 462-2580 462-2632	X 3	15	10	105
				X 4	15	10	105
				X 6	15	10	125
				X 8	21	14	150

+NOTE: This size not available with a size on size outlet.

++NOTE: Recommended for IPS PVC, STEEL, C-900 PVC, Ductile Iron Pipe Diameters. Not recommended for Pit Cast Iron Pipe. For oversized or Pit Cast Iron Pipe, see next larger range.

*NOTE: Not available in 10" OR 12" outlet sizes

For larger sizes and outlets, see JCM 412 Tapping Sleeve or JCM 452 All Stainless Steel Tapping Sleeve.

HOW TO ORDER - JCM TAPPING SLEEVES

- Determine O.D. of pipe.
- Select proper sleeve O.D. range.
- Specify catalog number and outlet size.

Example: For PVC pipe with 8.63 O.D. with 6" outlet, order: 432-0863 x 6. For carbon steel flange, order 462-0863 x 6.



Certified to NSF/ANSI 61